



# BOBCATRE

Instinct-Led. Risk-Ready.

What We Can Do For You ... (Capacity Providers)  
June 2026



## What We Provide

- **Underwriting** We are “the underwriters’ MGA”, focused on producing outstanding results for our carriers
- **Distribution** Located in Tampa & London with superior access & distribution
- **Responsive Market** Respected with long established client & broker relationships
- **Portfolio Design & Management** We build bespoke portfolios tailored to a carrier’s specific risk appetite
- **Modelling** All risks modelled pre-bind in RMS ~ TigerEye used for portfolio “roll-up”
- **Claims** Settled quickly - an essential component of our “promise to pay” (3 day turn-around)
- **Data Warehouse** Best in class MI with no legacy issues
- **Experience** 55+ years underwriting within Bobcat Re
- **Profit** Historically, profitable

### Products offered:

- Cat XL
- ILW
- Pro Rata
- Risk XL



## Underwriting Philosophy & Facility Mechanics

- Bobcat Re was established in November 2025 by a group of private investors including the former K2 CAT team (David Carson and the team have been managing MGAs since 2013)
- We have written **property treaty business** o.b.o. our carriers **since 2014**, deliberately focusing our efforts on a small number of territories that we know well, binding > USD 725m of premium and committing nearly USD 8bn of limit
- With a presence in both Tampa and London, Bobcat Re's principals have a reputation for a **strong underwriting culture**, backed by **efficient service** and **robust capital backing**
- We do not look to underwrite an index of any market; **judicious client selection** is at the heart of our business
- All our facilities are separate with single carriers
- We are **motivated by creating profitable, durable portfolios**
- Capital is accessed either via a **balance sheet**; or using a **fronting** company with pre-defined levels of collateralisation
- All transactions emanate from the US
- Minimum required gross premium per facility: USD 5m
- **Negotiable over-rider** payable to Bobcat Re on all premiums bound under the facility (this covers underwriting, production, actuarial, loss modelling / exposure management; MI; premium / claim processing etc.) plus PC (after negotiable carrier expenses)
- Original brokerage payable plus local taxes (e.g. FET, if applicable) or fronting-fee
- **All claims are agreed by the carrier** (based on recommendation from Bobcat Re) within a pre-agreed timeline
- **Quarterly modelled RMS portfolio roll-up** using TigerEye
- **Monthly premium / claim bordereaux**



## What We Look For

- **Financially robust** clients
- With ... **strong underwriting**, management & claims cultures
- Who ... **out-perform** their markets when large losses occur and to whom **reinsurance is a valued component of their risk management**
- We ... **do NOT look to write an index of the market** - the number of clients we have in any particular region is dependent on the size of the respective market - clearly, there must be a realistic expectation of profit over time
- We ... are **not afraid to walk away** from clients who fail to demonstrate this
- We ... **encourage frequent broker & client liaison**, both in London and abroad

## What We Need

- **First class security** (minimum AM Best A- rating or fronted / collateralised)
- **Flexibility** ~ automatic underwriting capacity
- Multi-year commitment (ideally, min. 3 years)
- **Supportive, well-capitalised, forward-thinking backers**

The underwriters are supported by the in-house **catastrophe modelling** and **exposure management** team, together with **actuarial, compliance, management information and claims** resources

## What You Will Get

- Complete **transparency**
- Years of **profitable underwriting** experience
- A portfolio of **top quality clients**, diversified by geography & peril
- **Exposure to precisely fit your risk appetite**
- Bobcat Re as a **relentless advocate** for your business





# Where We Write

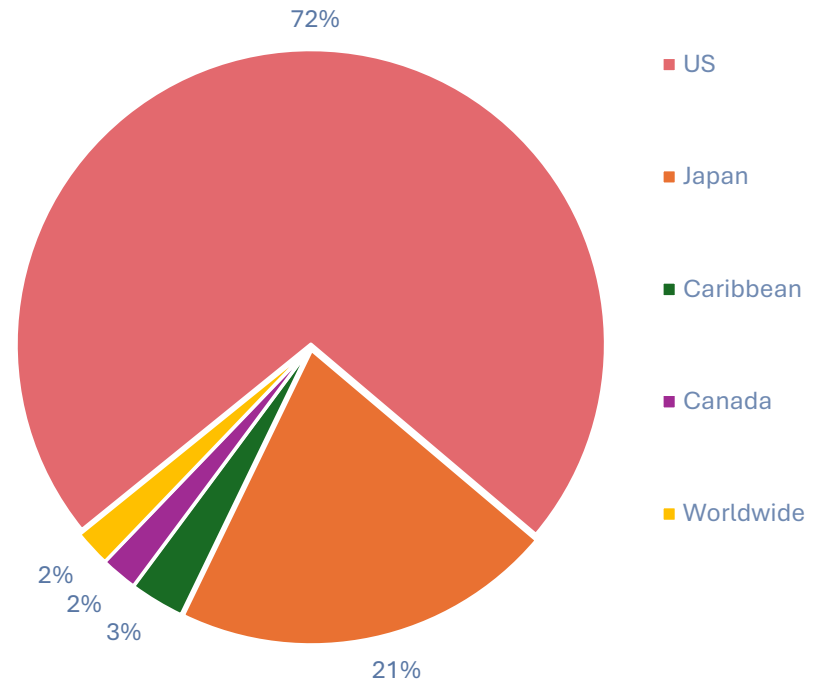
- All facilities are carrier-specific and territory specific
- Bobcat Re deliberately concentrates on property treaty business sourced, principally, from London market brokers, emanating from:

- US
- Canada
- Caribbean
- Japan

We have reinsured most of our clients for > 15 years and, in some cases, 30+ years

- Bobcat Re’s USP is the ability to build totally bespoke portfolios tailored to a carrier’s specific risk appetite

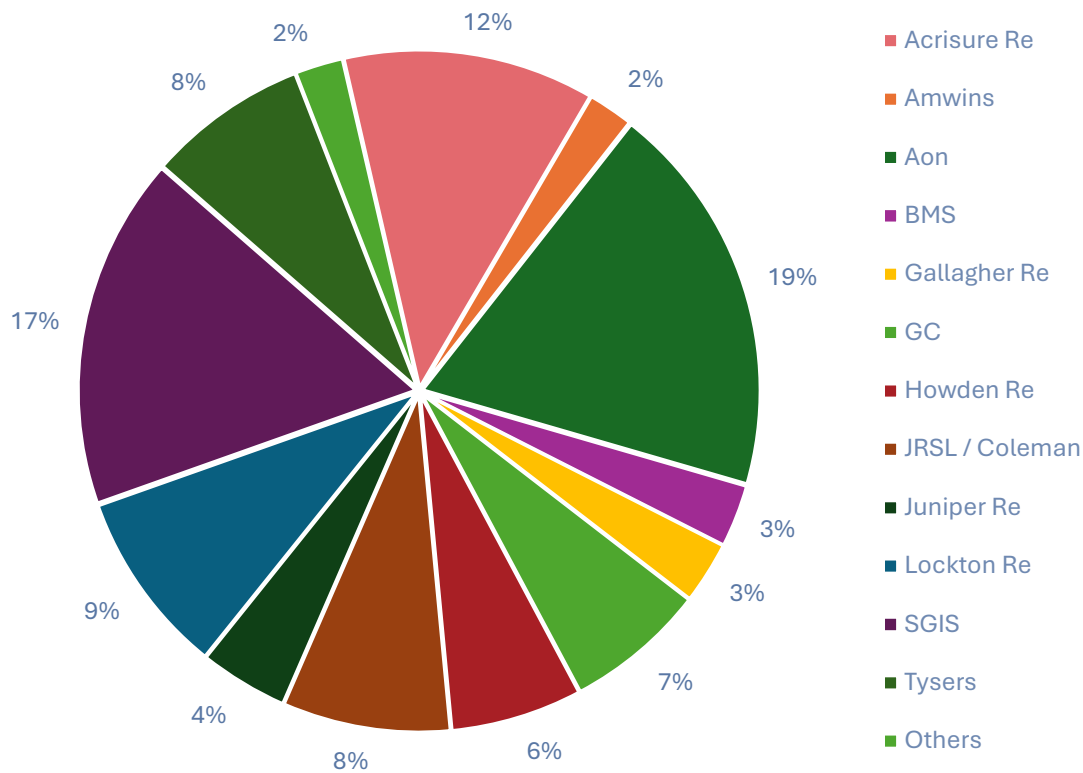
Historical GWP 2014-2025



Proactive      Relevant      Experienced



# Distribution



- **Efficient, agile & flexible** ~ prompt, responsive underwriting; automatic capacity allows optimum portfolio management; considerable dialogue with capacity providers, brokers & clients
- **Low Cost** ~ fully functioning underwriting team utilising sophisticated rating & modelling; with actuarial, claims and MI support
- **Proactive** ~ leveraging past relationships and developing new ones
- **Experienced market**
- **Alignment of interests**
- **Relentless advocate** of our capacity



## Our Clients

Across our underwriting facilities Bobcat Re's carriers offer a full suite of property treaty products to carefully-selected, financially robust, specialists with superior underwriting & claims management.

Here is a selection of some of them.





## Bobcat Re Team



**DAVID CARSON**

**Director & Founder**

David has 39 years' experience in the reinsurance industry, as both a broker and underwriter, specialising principally in property treaty business. He was previously the Managing Director of K2 CAT (formerly Pioneer CAT) which he founded in 2013. He has held senior underwriting and management roles in Lloyd's at Hardy, DP Mann / Faraday and RA Edwards. He started his reinsurance career at Greig Fester in 1987. David is a graduate of the University of Exeter and is ACII / Chartered Insurer designated. David helped establish Bobcat Re in November 2025.



**GLENN JACKSON**

**Manager**

As well as being a founding investor in Bobcat Re, Glenn has served as Safepoint Insurance's Chief Reinsurance & Strategy Officer since October 2018. He launched his reinsurance career in 1983 as a treaty & fac broker specializing in Property, Marine, Energy & Aviation. With a wealth of experience in alternative property cat products, he has advised capital market participants and insurance/reinsurance entities in the structuring, modelling, & execution of alternative reinsurance transactions, including SPVs, Captives, Sidecars & Collateralized reinsurance contracts. Glenn is responsible for all underwriting decisions at Bobcat Re.



**JAMES SHARPINGTON**

**Associate Director**

Sharpy started working with David in July 2018 at Pioneer CAT. He has a strong track record in the property cat market in both broking and account management, latterly as a Senior Broker for BMS, having started his career at Benfield in 2007. James is a graduate of Durham University and is ACII / Chartered Insurer designated. He is one of the founding investors in Bobcat Re.








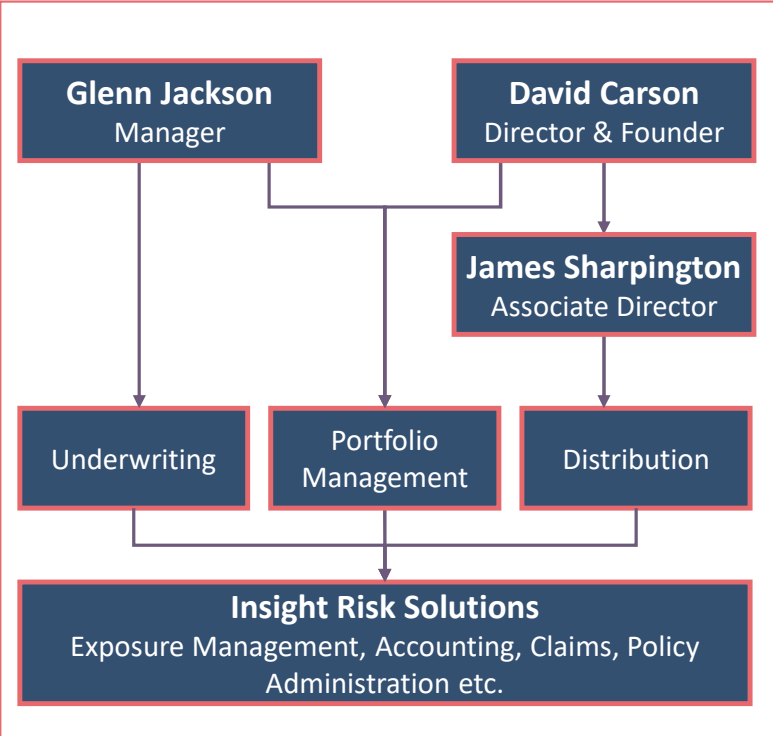
# BOBCAT RE



## About Us

## Our Team

-  **Bobcat Re is a new, US-based MGA** established by a group of private investors, including the former K2 CAT team.
-  We bring **property catastrophe reinsurance underwriting, distribution and portfolio management expertise** to capacity providers, via a number of delegated cat facilities.
-  Bobcat Re deliberately exclusively focuses on the **US, Japan, Canada and the Caribbean**.
-  Our USP is the ability to **build totally bespoke portfolios tailored exactly to a carrier's specific risk appetite**. We are motivated by creating **profitable, durable** books of business.
-  **In-house modelling, actuarial, claims, compliance and best-in-class MI resources** support the underwriting team<sup>1</sup>. Back-office services are supplied by Insight Risk Solutions.



<sup>1</sup> All our facilities are separate with single carriers – lines are not aggregated where more than one facility is involved on the same programme. Minimum rating for carriers is A- (AM Best or S&P). Business can be accepted either via a carrier's balance sheet; or using a fronting company; or via a collateralised QS (also using a fronting company).

**INSTINCT-LED. RISK-READY.**

# Contact Us



If you would like to know more about **Bobcat Re** please contact:

## Tampa

**Glenn Jackson**

[gjackson@bobcatre.com](mailto:gjackson@bobcatre.com)

+1 919 619 8435

4010 Gunn Highway, Tampa, FL 33618. USA

## London

**David Carson**

[dcarson@bobcatre.com](mailto:dcarson@bobcatre.com)

+44 7738 052 156

**James Sharpington**

[jsharpington@bobcatre.com](mailto:jsharpington@bobcatre.com)

+44 7920 182 152

4<sup>th</sup> Floor, 2 Minster Court, London EC3R 7BB. UK